

Morse Decorated with the Crucifixion and the Monogram of Abbot Walter Clifton of Warden Abbey

Author(s):

Michael Carter

URL:

<https://britishartstudies-06.netlify.app/morses/>

Citation (Chicago):

Carter, Michael. "Morse Decorated with the Crucifixion and the Monogram of Abbot Walter Clifton of Warden Abbey." In *British Art Studies: Invention and Imagination in British Art and Architecture, 600–1500* (Edited by Jessica Berenbeim and Sandy Heslop). London and New Haven: Paul Mellon Centre for Studies in British Art and Yale University Press, 2017. <https://britishartstudies-06.netlify.app/morses/>.

Citation (MLA):

Carter, Michael. "Morse Decorated with the Crucifixion and the Monogram of Abbot Walter Clifton of Warden Abbey." *British Art Studies: Invention and Imagination in British Art and Architecture, 600–1500* (Edited by Jessica Berenbeim and Sandy Heslop), Paul Mellon Centre for Studies in British Art and Yale University Press, 2017, <https://britishartstudies-06.netlify.app/morses/>.

© 2017 Yale University

The text of this work is licensed under a [Creative Commons Attribution 4.0 International License](https://creativecommons.org/licenses/by/4.0/). Unless otherwise indicated, all illustrations are excluded from the CC BY license. To view a copy of this license visit <https://creativecommons.org/licenses/by/4.0/>.

Morse Decorated with the Crucifixion and the Monogram of Abbot Walter Clifton of Warden Abbey

One Object by **Michael Carter**

WORD COUNT:521

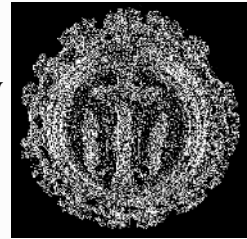


Figure 1

Unknown maker, *Copper-gilt and enamel roundel with silver mount from Warden Abbey*, Bedfordshire, 14th century. Collection the British Museum, London, (1853,0607.1). Digital image courtesy of Trustees of the British Museum.

The circular copper-gilt plaque (fig. 2) is decorated with a relief of the Crucifixion with the Virgin and St John. The dead Christ hangs on the cross beneath the titulus inscribed *INRI*. The flanking figures stand on pedestals, joined to the cross by curved brackets. The scene is set against a blue enamel background decorated with pastoral staffs and the initials “W C” in Lombardic script. The plaque, and two similar pieces, were bought by the British Museum in 1853, having been found at Shefford, close to the site of Warden Abbey, Bedfordshire. The first of the other plaques (fig. 3) is decorated with a mount of the Virgin and Child flanked by enamel shields with the coat of *arms azure, three pears, or*, heraldry used by Warden Abbey. The second (fig. 4) has a mount with a relief of a shield-holding angel. The shield is inscribed with the initials “W C”, each letter surmounted by a crown. Between the initials is a pastoral staff. On the reverse of each of the plaques are fragments of suspension loops (fig. 5).¹



Figure 2

Unknown maker, *Copper-gilt and enamel roundel with silver mount from Warden Abbey, Bedfordshire, 14th century.* Collection the British Museum, London, (1853,0607.1). Digital image courtesy of Trustees of the British Museum.

Figure 3

Unknown maker, *Copper-gilt and enamel roundel with silver mount from Warden Abbey, Bedfordshire, 14th century.* Collection the British Museum, London, (1853,0607.2). Digital image courtesy of Trustees of the British Museum.

Figure 4

Unknown maker, *Copper-gilt and enamel roundel with silver mount from Warden Abbey, Bedfordshire, 14th century.* Collection the British Museum, London, (1853,0607.3). Digital image courtesy of Trustees of the British Museum.



Figure 5

Unknown makers, *Reverse, three copper-gilt and enamel roundels with silver mounts from Warden Abbey, Bedfordshire, 14th century.* Collection the British Museum, London, (1853,0607.1;1853,0607.3;1853,0607.2). Digital image courtesy of Trustees of the British Museum.

The plaque and its companion pieces were most likely morses, an ornament used to fasten copes, a cloak-like vestment worn for processions. Sets of such morses are mentioned in several medieval and Reformation-era inventories.² The heraldic ornament and site of discovery leaves little doubt that these plaques are from Warden Abbey, a mid-ranking Cistercian house founded in 1136. By the late Middle Ages most, if not all, major monasteries had their own coat of arms. It was also common for heads of religious houses to adopt the use of personal heraldry, including monograms. Typically, these consisted of their prelate's initials combined with a pastoral staff.³ The initials on the plaque under discussion can be identified as those of Walter Clifton, abbot of Warden between about 1346 and 1397. He is depicted in a stained glass window datable to 1381–82 at the parish church of St Laurence, Old Warden (fig. 6), where he is shown kneeling in supplication to St Martha. The borders of these lights are set with small panels, each of which has a Lombardic letter “W” with a crown above.⁴ These are similar to the abbot's badge on one

of the roundels, and can also be compared to the monogram used by Clifton's contemporary, Abbot Nicholas Litlington of Westminster Abbey (1362–86) in his great Missal.⁵



Figure 6

Stained-glass window at Old Warden Parish Church, Bedfordshire, depicting Abbot Walter Clifton of Warden Abbey, 1381-2. Digital image courtesy of Gordon Plumb.

Identifying Clifton as the patron dates the plaque to the late fourteenth century, which is supported by comparative evidence. As Marian Campbell recognized, the closest parallel is the plaque at the Musée des Beaux-Arts, Troyes (fig. 7), decorated with the white hart badge of Richard II (r. 1377–99), which was probably a brooch of some kind.⁶



Figure 7

Copper-gilt and enamel badge decorated with the white hart badge of Richard II, circa 1377-99.
Collection Musée des Beaux - Arts de Troyes,
(871.6.1). Digital image courtesy of Troyes, Museum
of Fine Arts / Photo: Jean-Marie Protte.

The hand-holding angels around the rim of the Warden plaque are an unusual iconographic detail and are of devotional significance. St Bernard of Clairvaux, the greatest of all Cistercian saints, regarded angels as a model for communal life within a monastery, and in one of his sermons stated that “angelic hands” supported the monks. Devotion to angels was also gaining wider popularity during the reign of Richard II.⁷

About the author

Michael Carter is a Senior Properties Historian at English Heritage. He was previously Andrew Mellon Postdoctoral Fellow at the Courtauld Institute of Art, where he was awarded his PhD. He has published widely on monastic art and architecture in late medieval England.

Footnotes

1. For a detailed analysis, see M. Carter, “Cracking the Code: The Warden Abbey Morses, Luxury Metalwork and Patronage at a Cistercian Abbey in the Late Middle Ages”, *Antiquaries Journal* 91 (2011): 175–93.
2. Examples are cited in Carter, “Cracking the Code”, 188–90.
3. For a discussion of the use of heraldry by heads of religious houses, see M. Heale, “Mitres and Arms: Aspects of the Self-Representation of the Monastic Superior in Late Medieval England”, in *Self-Representation of Medieval Religious Communities: The British Isles in Context*, ed. A. Müller and K. Stöber (Berlin, 2009), 99–124.
4. R. Marks, “Cistercian Window Glass”, in *Cistercian Art and Architecture in the British Isles*, ed. C. Norton and D. Park (Cambridge: Cambridge University Press, 1986), 225–26.

5. J. Backhouse, "The Litlyngton Missal", in *Age of Chivalry: Art in Plantagenet England, 1200–1400*, ed. J. Alexander and P. Binski (London: Royal Academy, 1987), 518–19.
6. M. Campbell, "Badge of Richard II", in *Age of Chivalry*, ed. Alexander and Binski, 524.
7. Carter, "Cracking the Code", 185–86.

Bibliography

Alexander, J., and P. Binski, eds. *Age of Chivalry: Art in Plantagenet England, 1200–1400*. London: Royal Academy, 1987.

Backhouse, J. "The Litlyngton Missal." In *Age of Chivalry*, ed. Alexander and Binski, 518–19.

Campbell, M. "Badge of Richard II." In *Age of Chivalry*, ed. Alexander and Binski, 524.

Carter, M. "Cracking the Code: The Warden Abbey Morses, Luxury Metalwork and Patronage at a Cistercian Abbey in the Late Middle Ages." *Antiquaries Journal* 91 (2011): 175–93.

Heale, M. "Mitres and Arms: Aspects of the Self-Representation of the Monastic Superior in Late Medieval England." In *Self-Representation of Medieval Religious Communities: The British Isles in Context*, ed. A. Müller and K. Stöber. Berlin, 2009, 99–124.

Marks, R. "Cistercian Window Glass in England and Wales." In *Cistercian Art and Architecture in the British Isles*, ed. C. Norton and D. Park. Cambridge: Cambridge University Press, 1986, 211–27.

Imprint

Author	Michael Carter
Date	29 June 2017
Category	One Object
Review status	Peer Reviewed (Editorial Group)
License	Creative Commons Attribution-NonCommercial 4.0 International (CC BY-NC 4.0)
Downloads	PDF format
Article DOI	https://doi.org/10.17658/issn.2058-5462/issue-06/morses
Cite as	Carter, Michael. "Morse Decorated with the Crucifixion and the Monogram of Abbot Walter Clifton of Warden Abbey." In <i>British Art Studies: Invention and Imagination in British Art and Architecture, 600–1500</i> (Edited by Jessica Berenbeim and Sandy Heslop). London and New Haven: Paul Mellon Centre for Studies in British Art and Yale University Press, 2017. https://britishartstudies-06.netlify.app/morses/ .